

# Casa á BEIRA MAR

AN ARCHITECTURAL FEAT  
WITH INTERIORS TO MATCH

**METROPOLE ARCHITECTS 031 303 7858**

This property, envisioned by **Metropole Architects**, offers a design philosophy that revolves around a harmonious blend of modern aesthetics and the natural environment. The home stands as a bold testament to refined modernism, utilising materials like steel, glass and concrete with meticulous detail.

**SYGNATUR PROJECTS 083 777 6690**

**Sygnatur Projects** specialises in the construction of luxury, upmarket homes on the North Coast. The company constructed a home of superior quality with a focus on high-end finishes, for which **Sygnatur Projects** is known. The **Sygnatur Projects** team consists of skilled employees from site to office who ensure a hassle-free building process for its clients.

**CONBINLIGHT 031 312 1460**

**CONBINLIGHT** was responsible for the bespoke lighting design that enhances the architecture of this home. This was achieved by incorporating linear LED lighting to complement the structure's clean lines so that rather than the lighting source being visible, the effect is seen on a surface or a wall. Contemporary suspension lamps were also used to help create the luxurious finish.

BY TRISHA HARINATH • PROJECT CONSULTANT JENNI MCCALLUM  
PHOTOGRAPHERS GRANT PITCHER AND MO HEINE

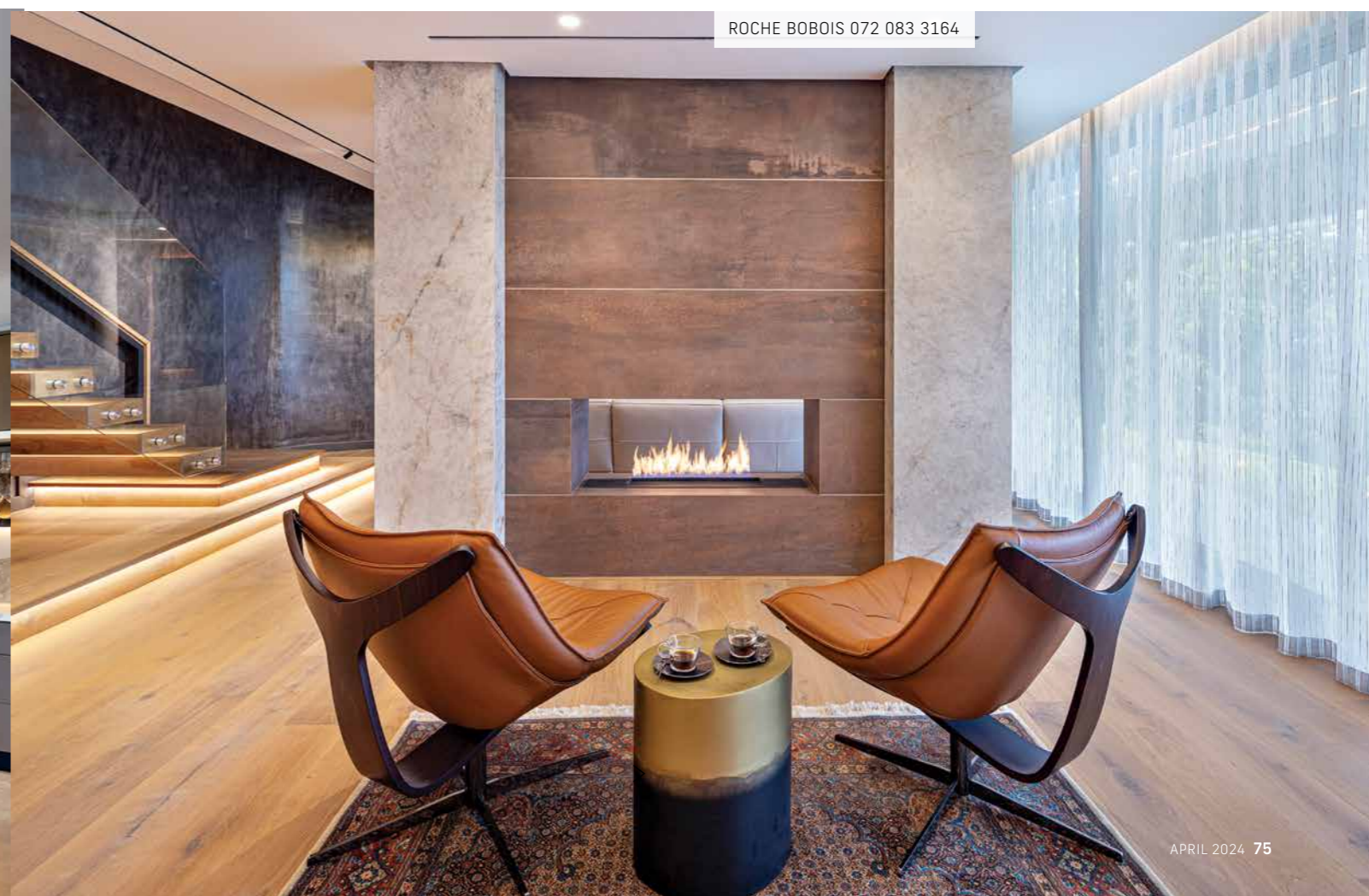
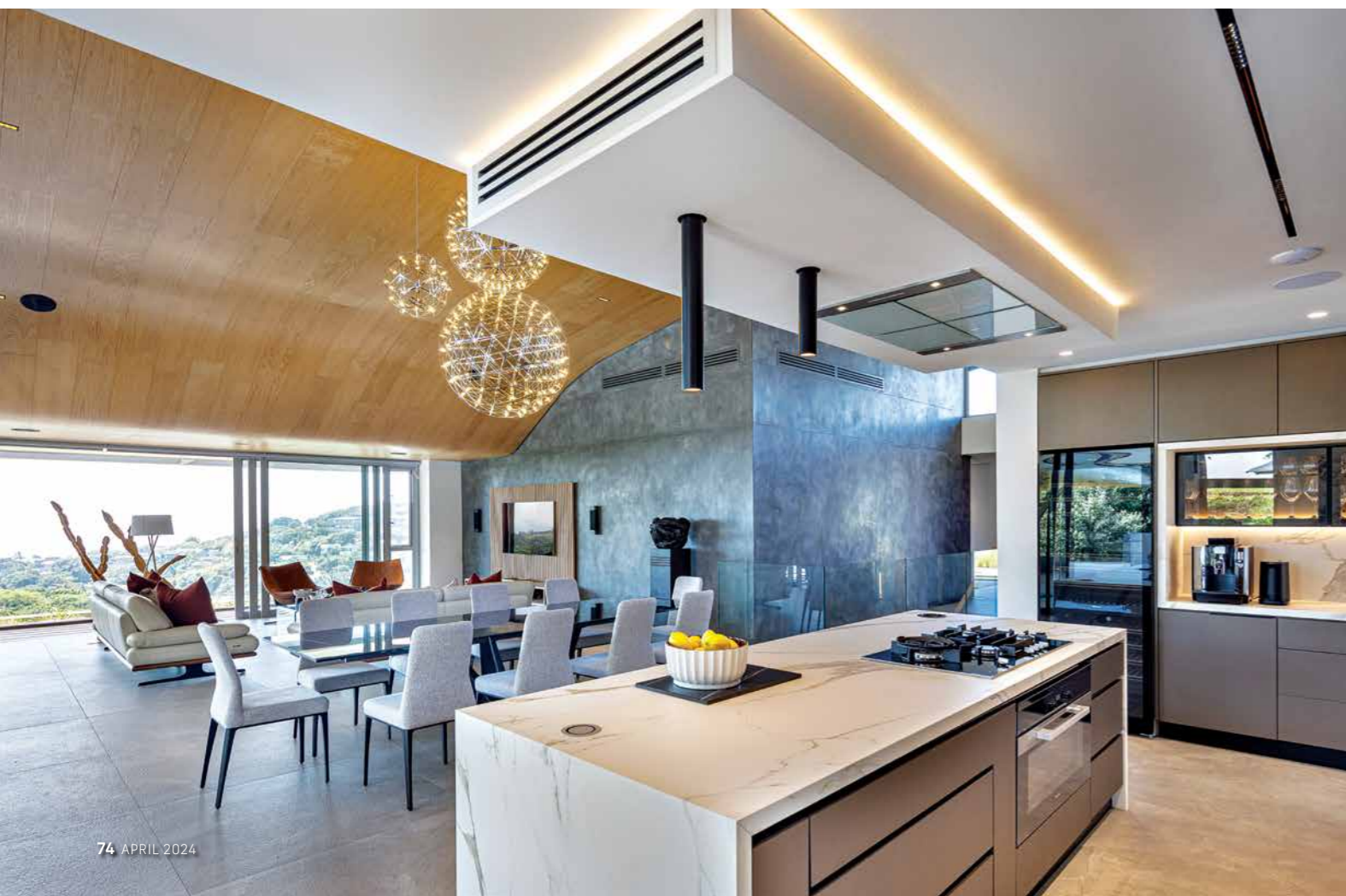


“A standout, talking-point feature of the home is the sensual organic curved oak timber-clad ceiling that provides a ‘wow factor’.”

**N**amed “Casa á Beira mar” – Portuguese for “house by the sea”, this elaborate 750m<sup>2</sup> modern four-bedroom home is situated in a prestigious golf estate along the northern coast of KwaZulu-Natal. The design, according to the architect, sought to create a vision in harmony with the site itself, the estate streetscape, the relationship to the neighbouring properties and the estate’s

design guidelines. However, it also needed to be one that represents the individual tastes and aspirations of the home owners, their appreciation for contemporary design and their desire for a distinctive, progressive and dynamic architectural aesthetic. The result shows a bold yet refined modernism infused with a rooting of the building in its climate and coastal forest landscape, with a sequential buildup of space, the celebration of >

**BELOW: Roche Bobois** is a world leader in high-end furniture. The owner of this property wanted easy designer and contemporary pieces for his gorgeous villa. He was looking for durable European pieces, such as the sofas, armchairs, tables and chairs, which **Roche Bobois** supplied. Light and neutral colours were selected as they complement the magnificent architectural features of the home. The sofas from the Envergure and Nota Bene ranges are made from leather for durability, and the functional Alliage table is manufactured from a ceramic top.



ROCHE BOBOIS 072 083 3164



“Complementing the marvellous architecture, the interior of the home is also a visual feast.”

sea views and the concept of relaxed outdoor living echoing the essential characteristics of the South African residential model.

The home is refined and rigorously detailed – the sophisticated yet understated use of steel, glass and concrete with clean crisp man-made lines and the tactile natural materials, including timber and stone, buried in >



#### PORSCHE SOUTH AFRICA 011 540 5000

Puristic, expressive and timeless are three attributes that describe every **Porsche**. But these descriptions are especially true of the all-electric Taycan, which takes the **Porsche** DNA into a new automotive era. It boasts a dynamic flyline and fluid yet sharp silhouette. The **Porsche** Active Aerodynamics System transforms it from an electric vehicle to a sports car with all the **Porsche** specifications. The driver-centric interior is digital, simple and sustainable, from the **Porsche** advanced cockpit that blends visually with the interior to the wide range of customisable options and innovative material concepts. The Taycan exemplifies the distinctive features of every **Porsche**: pure emotion and maximum driving pleasure.





AFRIGRAN 031 577 8090

**ABOVE: AFRIGRAN** is a specialist in crafting stone products and was responsible for the stonework featured in this property. Made from natural stone, the vanity, including the drawer fronts, offers a sleek, modern and clean look. The drawer fronts, in particular, show off the company's innovative skills when it comes to working with stone. Here, **AFRIGRAN** grooved the fronts of the drawers for a textured finish enhancing the same stone used for the vanity top, resulting in an aesthetic in keeping with the modern lines even though a traditional material was used. Working on this property was a privilege for **AFRIGRAN** – as a company, it could showcase its skills and create products with standout features and quality finishes.

**“Interior styling, furniture and finishes are a fusion of colour and texture that enhance and synergise the spaces with a contemporary aesthetic.”**

yet offset from the natural coastal forest landscape come together to create an architectural symphony that goes over and above expectations.

A standout, talking-point feature of the home is the sensual organic curved oak timber-clad ceiling that provides a “wow factor”. This feature enhances the experience of the vertical volume of the entrance hall, the main circulation spine of the property and the open-plan living areas. Complementing the marvellous architecture, the interior is also a visual feast. Interior styling, furniture and finishes are a fusion of colour and texture that enhance and synergise the spaces with a contemporary aesthetic.>



This gorgeous home by the sea transcends functionality and offers the resident family and their guests a visually captivating, comfortable and intimate living experience. 🏡

#### **CONTACTS:**

**AFRIGRAN** – a leading stone fabricator in Durban,  
031 577 8090, [info@afirgran.co.za](mailto:info@afirgran.co.za)

**COBINLIGHT** – bespoke architectural lighting,  
031 312 1460, [info@cobin.co.za](mailto:info@cobin.co.za), [www.cobinlight.co.za](http://www.cobinlight.co.za)

**METROPOLE ARCHITECTS** – architects,  
031 303 7858, [info@metropolearchitects.com](mailto:info@metropolearchitects.com),  
[www.metropolearchitects.com](http://www.metropolearchitects.com)

**PORSCHE SOUTH AFRICA** – official Porsche partner  
in South Africa,  
011 540 5000, [queries@porsche.co.za](mailto:queries@porsche.co.za),  
[www.porschesouthafrica.com](http://www.porschesouthafrica.com)

**ROCHE BOBOIS** – high-end international furniture,  
[s.fanchette@roche-bobois.com](mailto:s.fanchette@roche-bobois.com), [n.chamsi@roche-bobois.com](mailto:n.chamsi@roche-bobois.com)  
<https://www.roche-bobois.com/en-ZA>

**SYGNATUR PROJECTS** – construction of luxury,  
upmarket homes,  
083 777 6690, [john@johngoss.co.za](mailto:john@johngoss.co.za), [www.sygnatur.co.za](http://www.sygnatur.co.za)

