

Bold and BEAUTIFUL

DARK AND MOODY SPACES FOR A TRENDY AESTHETIC

METROPOLE ARCHITECTS 031 303 7858

In line with the client's brief, **Metropole Architects** created a generous four-bedroom family home in the form of a contemporary building rooted in its climate and the estate's luscious coastal forest landscape. **Metropole Architects** offered a full architectural service from design concept generation to overseeing the completion of the construction process.

BY TRISHA HARINATH • PROJECT CONSULTANT JENNI MCCALLUM
PHOTOGRAPHER MALITZA DE KOCK

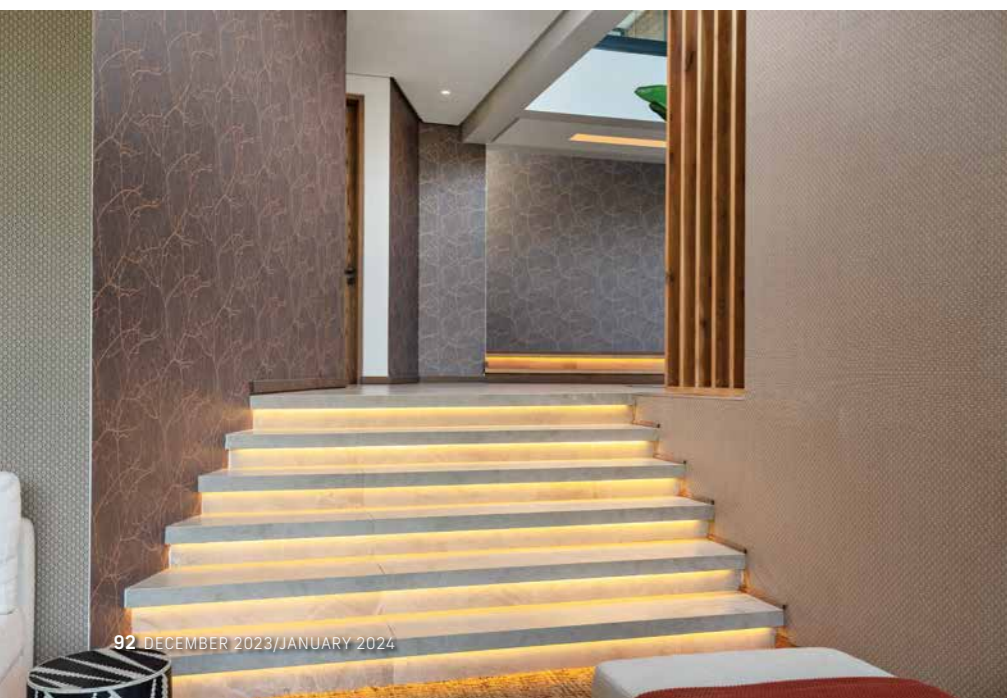


"We opted to sacrifice additional floor space for a spectacular double-volume entrance, which is visible on entering," explains the owner. This, he says, gives you a glimpse into the home, teasing you to come inside. As huge focus was placed on creating entertainment spaces for everyone in the family, at the back of the residence is a big kids' entertainment area. >

BELOW: Jen Joinery & Carpentry prides itself on its passion, knowledge and commitment to its work and continuously puts its experience to the test to create exactly what its clients want. Offering clients excellent joinery and carpentry services, you can expect the best when you contract **Jen Joinery & Carpentry**.

"If I could give any advice to home owners, it is to plan your entertainment area properly."
– the home owner

The inspiration for this home was simple – it needed to be aesthetically pleasing for the residing family consisting of dad, mum and two teenage daughters. With a focus on entertainment spaces as well, this is indeed a dream home for this family of four. The design is very modern, with an abundance of cantilevered slabs.



JEN JOINERY & CARPENTRY 073 813 8816

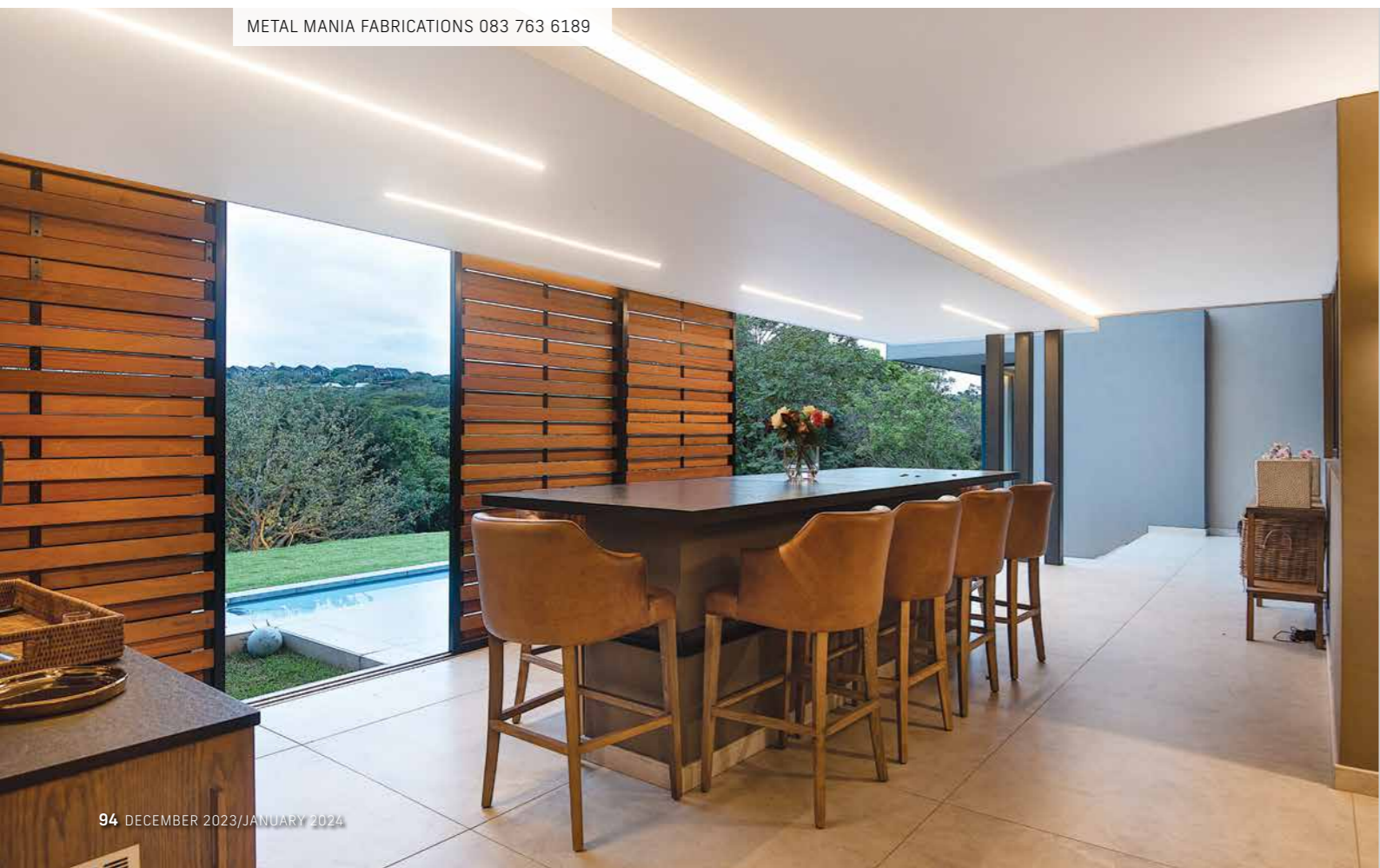


BELOW: Metal Mania Fabrications is a North Coast-based company in KwaZulu-Natal with over 20 years of experience in the specialised steel manufacturing industry. The company prides itself on finely finished products for your home. **Metal Mania Fabrications** specialises in steel staircases, balustrades, screens, crittall-style glass doors, and custom furniture.

Here the girls can spend time with their friends, making as much noise as they want, without interfering with the adults, who have their own entertainment space. "This is basically a den for them to go wild in," jokes the owner.

The interior spaces are every bit as indulgent and statement-like as the design of the home. Opting for a neutral palette with black as a predominant secondary colour, some of the rooms are dark, moody and dramatic. There is also a range of designer wallpaper that enhances the fashionable look while creating a visual and textural masterpiece. >

METAL MANIA FABRICATIONS 083 763 6189



PORSCHE SOUTH AFRICA 011 540 5000

Porsche has thoroughly refined the third generation of the Cayenne with comprehensive changes to the powertrain, chassis, design and equipment. This has further extended not only to on- and off-road performance, but also luxurious everyday comfort. The new Cayenne features a highly digitised display and control concept, new chassis technology and innovative high-tech features. Exterior design modifications include the bonnet, bumpers, fenders, boot and the introduction of Matrix LED headlights.





“The interior spaces are every bit as indulgent and statement-like as the design of the home.”

There is plenty here for the eyes to settle on, including the noteworthy lighting, such as the remarkable chandelier in the double-volume entrance and the trendy pendants in the bedroom. Although the interior spaces are on trend, they are timeless in their appeal and will last well after interior trends come and go.

If you, like this family, want a home that caters to all your needs and those of your guests, this owner says: “If I could give any advice to home owners, it is to plan your entertainment area properly.”

Know what is a comfortable passage around your entertainment area. Don't skimp on spaces for your guests to move around your entertainment areas when they are sitting at the bar. You want a comfortable free-flowing area. Think of accessibility to cupboards, fridges and ice machines. Try to imagine the tracks or routes people are going to walk regularly and make it comfortable for them and you. A nice, spacious, well-finished guest loo is also something to consider.”

CONTACTS:

- JEN JOINERY & CARPENTRY** – joinery and carpentry, 073 813 8816, info@jenjoinery.co.za, www.jenjoinery.co.za
- METAL MANIA FABRICATIONS** – steel, timber and glass products, custom furniture, 083 763 6189, metalmaniafabrications@gmail.com
- METROPOLE ARCHITECTS** – architects, 031 303 7858, info@metropolearchitects.com, www.metropolearchitects.com
- PORSCHE SOUTH AFRICA** – official Porsche partner in SA, 011 540 5000, queries@porsche.co.za, www.porschesouthafrica.com

